



# 2021-2022 ANNUAL REPORT



**TRANSFORMING LIVES STEP BY STEP**

# MESSAGE FROM THE DESK



Since its' beginning days, Sakshi has always focused to bring solutions with an objective of providing better lives to the marginalized people. Sakshi has made that possible by developing a dedicated team working day and night, who challenge the problems, a large army of passionate, committed volunteers, contributors and people who have supported us with material, time, efforts, dedication, networks and hard work.

The conviction to stick with each other has made this journey beautiful. Sakshi's story represents the story of common people of India. Going forward in the face of new issues, challenges our path has also evolved and emerged around people and will bring new hopes to the hopeless and homeless people for a better future where we will be better equipped to deal with the new world problems.

Lastly, my gratitude to all Our Donors, partners & volunteers – by which support we've been able to create an ever-lasting impact in the lives of many people and families.

**~Dr. Mridula Tandon, President**

Two years of pandemic has brought changes in the lives of many people, is a reminder of the unpredictability of life; However, Sakshi continue its work for the betterment of the needy all through this period and gradually brings back the normalcy in life of the people with whom we are working. This highlights that even in the toughest times our values, purpose, resilience and standing with the people can be the compass to navigate whatever the future brings. While we stand with each other I believe, "This world is the world of volume, we do need solutions involume and the people who work on those are also needed in volume."

**~Mr. Zuber Khan, Director**





# ABOUT SAKSHI

SAKSHI – Centre for information, education and communication, founded in 1993, is a non-profit voluntary organization registered under:

- The Societies Registration Act, 1860
- The Foreign Contribution Act
- Under Section 80 G of the Income Tax Act

Sakshi works towards a sustainable comprehensive community development through the means of Education, Hygiene and ensuring equitable opportunities for all.

We believe that the trifecta of Education, Health and Community development are the fundamental aspects to lead a sustainable and impactful growth in the lives of an individual and society as a whole.

Therefore, taking into consideration these aspects, Sakshi has been working to create an enabling and comprehensive path of change. We have been collectively progressing from poverty to prosperity by creating spaces and opportunities to empower the neglected section of the society.

*"Transforming the lives of neglected section of the society by enabling and providing them the tools and infrastructure to actualize their aspirations and hopes."*

*"Our mission is to create, find and support programmes that looks after the comprehensive well-being and empowers the neglected section of the society in an equitable manner."*

---

## Objectives

- To provide access to Primary education to underprivileged Children.
- To enable children from marginalized communities to coalesce with the mainstream society.
- To furnish employment opportunities to the youth for better livelihood.
- To raise awareness on the importance of education and upliftment of the girl child in urban Slum communities.

## Principles

- All-Round Care by providing for a healthy mind, body and soul.
- Serve as guides & mentors and assist in providing resources.
- Ensure Joyful Learning by ensuring teaching methods which are enjoyable via role play, songs, essays etc. for better retention, motivation & to ingrain a joyful work ethic in the children
- We strictly Commit to and follow a Sustainable approach towards what we are set out to achieve

## Values

Integrity



Collaboration



Empowerment



Agility



Respect



# 2021-22 at a Glance

## Impacted 537504 Lives



**Women - 318810**



**Children - 45981**



**Community – 70**



**Partners - 25**



**Themes - 7**

1.

## EDUCATION



55 centers & Schools

12 Partners



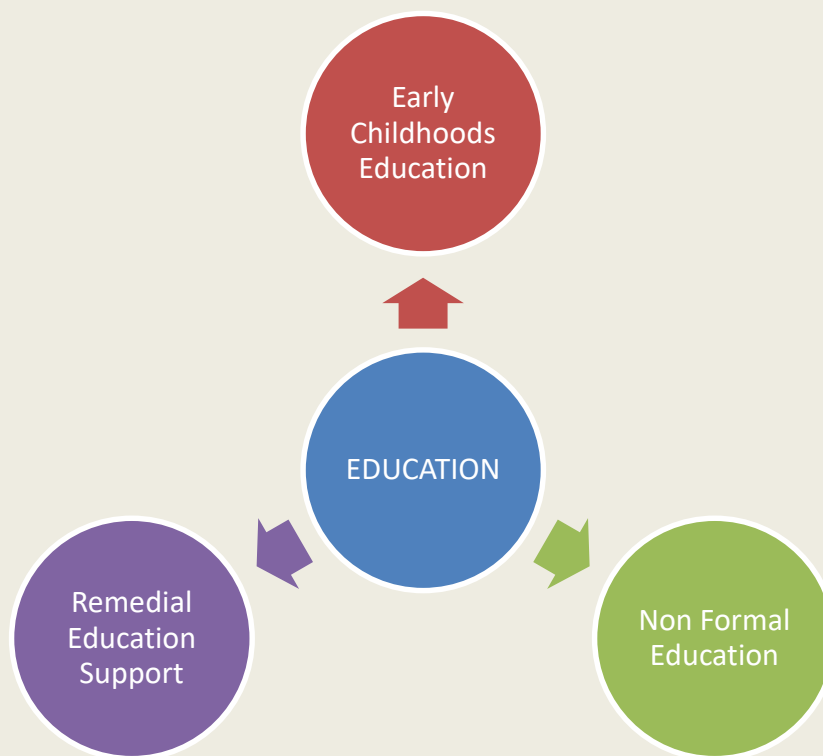
23600 Beneficiaries

Delhi/NCR (Delhi, Noida, Gurugram) being a hotspot for Out of school Children, with a migration rate of 91-97%, Sakshi has been making efforts to provide access to quality education to Out of School children (OoSC) as well as In school children, through government and Non- government institutions, in direct and public-private partnerships. Universal access to primary education has been considered an indispensable aspect of human development across international human rights conventions and treaties- right from Universal Declaration of Human Rights 1948, Millennium Development Goals 2000 to the most recent Sustainable Development Goals 2015. According to SRI-IMRB survey, which was conducted by the Ministry of Human Resource Development in 2014, there are estimated 60.41 lakh children are out of school in the age group of 6-13 years. The more recent NSSO 75th round conducted in 2017-18 provided a higher estimate of 3.22 crore out of school children in the age group of 6-17 year.



# Programmes In Education

(Support for Out of School Children)



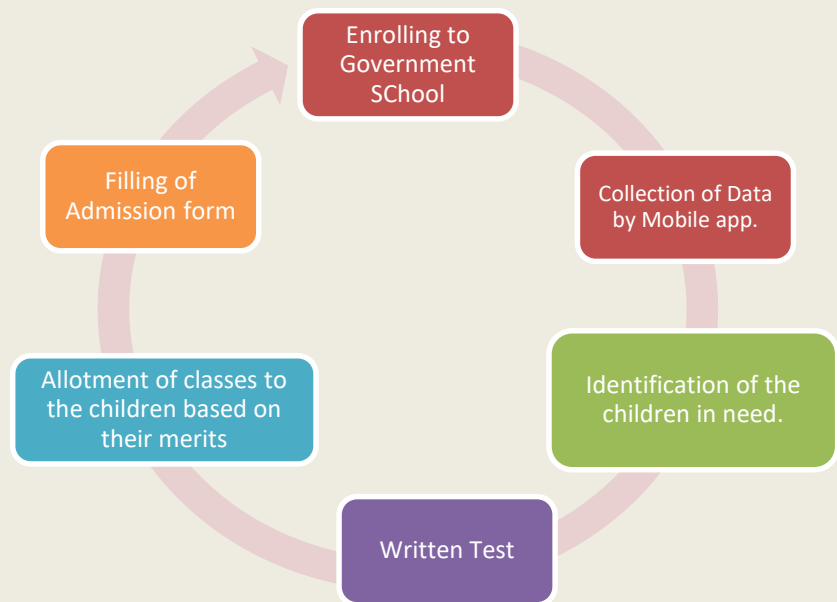
## **Non - Formal Education Support:**

Free and compulsory elementary education is a constitutional assurance and is a fundamental right to children in India. Despite continuous efforts there is a significant number of children who have either never been or have dropped out of school, specially the children from slum migrant families remain outside the periphery of quality education. Thus, Non formal education plays a very vital role in the rural & slum areas. It has proven to be a viable alternative to formal primary education for 5-14 year age group of children who cannot afford formal



primary Right to Education Act (RTE Act) use a reference period of 45 working days at any time after the beginning of a school year to identify out-of-school children. If a child does not attend school even for a day in this reference period they are identified as out-of-school children or dropped out. Based on the above understanding Sakshi is addressing this issue of school drop-out children and is approaching the issue of OoSC comprehensively guided by an inclusive paradigm.

The proposed model is moving away from the conventional bridge model and working towards creating a resilience model for the betterment and improvement of the children.



### Early Childhood Education Support:

Traditionally the early childhood years were considered to lay the foundation for inculcation of basic values and social skills in children. In India much of the early care and education of the child is considered to be informal, within the family and largely through the grandmothers' caring practices, stories, lullabies, and traditional infant games, handed down from one generation to the next.

At Early Childhood, one develops the cognitive, physical, social and emotional skills, which lay the foundation for holistic development. These learnings are largely determined by supportive family structure and community care practices.

But with the families coming from difficult socio-economic realities it is found that the burden of child-care is shifted on to the hands of the elder siblings of the family. This burden eventually keeps them away from the educational structure. With growing

urbanization, the need and increase in maternal employment has devoid children from accessing informal child care as it is essentially believed to be the responsibility of a woman.

This challenge paved way for organized Pre- School Education/ Early Childhood Care and Education (ECCE). Recognizing the significance of informal child care, Sakshi imparted ECCE for disadvantaged families. The curriculum is designed as activity based. The activities spanning for four hours in a day focuses on the overall development indicators necessary for a child's growth i.e. cognitive, physical development, language etc.





These ECCE centers in regions of Delhi and Gurgaon ensure a safe and healthy environment where the children can grow their knowledge, develop necessary skills of thinking, imagination, and writing. This also prepares them to become part of the mainstream school structure upon enrolment after turning 6 years old.

### **Remedial Education**

Remedial education is vital for the students who are the first generation learners and due to lack of guidance and parental support fall behind in an educational structure. The RECs help the children



the aim of help students do better with their academic grades by assisting them in achieving the required knowledge, understanding, application and skills sets vis-a-vis their school curriculum in an after school sessions at the centers.

to achieve their greater potential and develop over all personality so that they do not feel short of themselves and reach on the verge of dropping out of schools. The programme is designed in a manner which helps children by assisting them to understand and apply skills sets in accordance with the school curriculum. In this manner the children's confidence is boosted and motivates them to continue with their education. The program is designed with

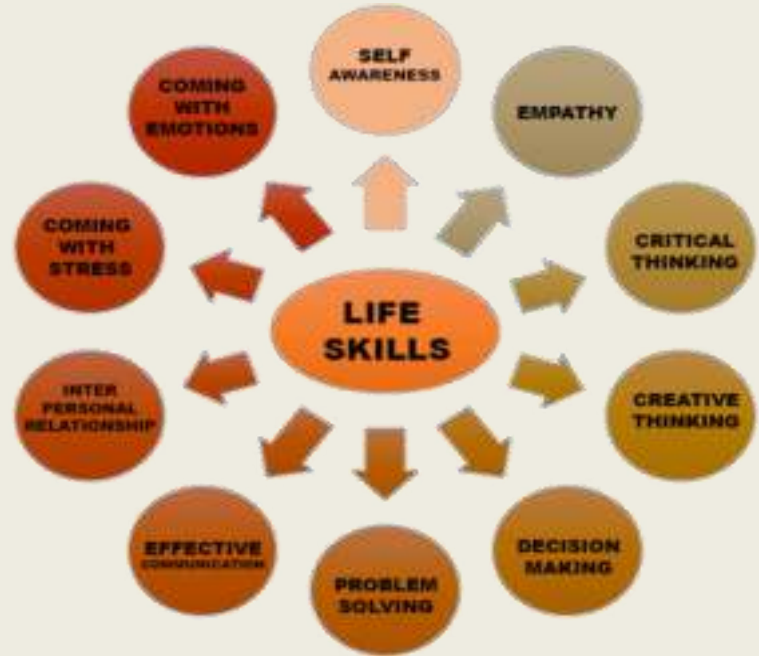


# In School Support



## Life Skills

Lumax Charitable Foundation, the CSR wing of Lumax, has been facilitating social initiatives over the years focusing on Health, Education, Girl child empowerment and life enrichment programmes. The Vision of the Foundation focusses on its endeavor to transform lives of children, youth and the elderly to have a better future and eternal hope. The mission translates to - Provide education, life skills and health in communities around the plant locations for a better and healthy life and various other life enrichment programmes.



Starting of the project since 2019, the project has successfully expanded

with a focus on transforming the lives of young individuals by enabling a better and brighter future. Currently we are running this project in 18 Government schools In Gurgaon, Rewari & Bawal blocks of Haryana and Sanand of Gujrat covering more than 3800 students from 9th Standard, especially who belong to poor or marginalized families. These sessions not only helping the students but also indirectly benefiting the families and friends of them, which is approximately more than 15000 of individuals. Other than above mentioned Life Skill education, Sakshi is also working in collaboration with four Government schools and imparting computer training to the students at free of cost. The school has allotted a particular room that Sakshi modified and turned into a child friendly classroom. The computer teachers are appointed and they



turned into a child friendly classroom. The computer teachers are appointed and they

provide computer classes to the students of the schools. With this initiative Sakshi is supporting 825 students in the schools.

## Digital Classroom Project:

Digital literacy is a tool that makes the individual able of using technologies like - information and communication to find, evaluate, create, and communicate information that requires both cognitive and technical skills. Various International commission suggests that digital literacy is essential to school's success and later a lifelong improvement for individuals. Embracing technology and digital literacy is a key factor to encourage learning from infancy through adulthood. Acknowledging the need and advancements in education and enabling

the children to be integrated with a digital global structure, Sakshi in partnership with Microsoft has come together to extend their support. We have managed to set up digital classrooms in 10 govt. schools in association with the Department of Secondary



Education, Government of Haryana and through those centers this year we have covered more than 2800 students from the government schools and marginalized communities.



2.

## GENDER



Covering 26 Locations



2 Partners



300300 Beneficiaries

Sakshi's Gender intervention has been one of the most fundamental aspects of achieving overall developmental perspective. There are many different variables which establishes women's freedom which includes geographical location (urban/rural), educational status, social status (caste and class), and age. Keeping these in view as a part of gender intervention Sakshi has focused on empowering women in terms of their Mental and Physical Health, Education, Training and Employment Opportunities.



**Skill Development**



**Mobile Helpline – 181**



**Mahila Panchayat**

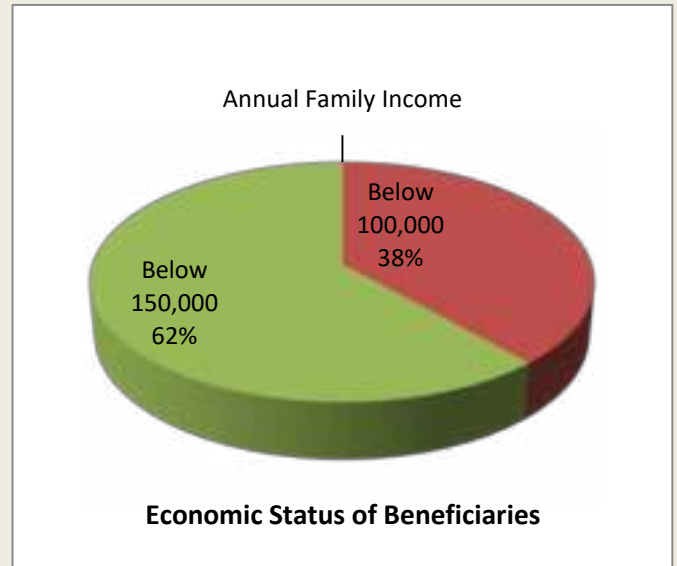
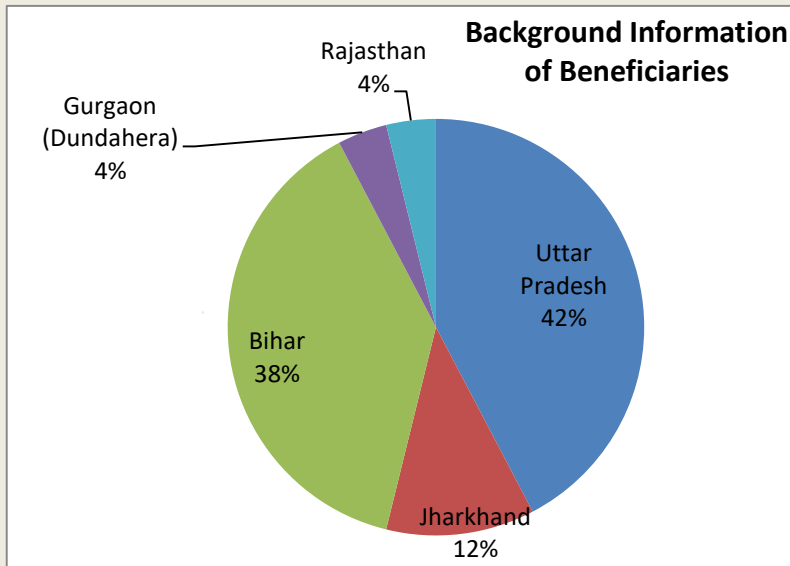
## a) Skill Development



Skill Development Project for the women from marginalized communities is an important aspect Sakshi's implementation work. Skill Development/Vocational training units of Sakshi are the centers to make the women and the adolescent girls with poor socio-economic background to become self-empowered. With that, objective Sakshi is imparting skill development training through its various centers situated at Jasola, Chadanhulla in South Delhi, Udyog Vihar & Dundahera in Gurgaon, especially those, who lost jobs during/due to COVID-19. This is a step to help these people restore their livelihood and support their families. To achieved this goal, Sakshi from support of CAF India and Rio Tinto has implemented the "LIVELIHOOD AND COMMUNITY SUPPORT SERVICE PROJECT" for the communities. The goal was to support the beneficiaries in developing their socio-economic conditions by imparting stitching and tailoring training with a job placement to each trainees. The focus was on the women beneficiaries.

This project contributes to access to sustainable livelihoods and strengthened the resilience of, underprivileged communities in Gurugram. This project aims to support underprivileged individuals who are engaged in / willing to start their career in garment industries as an income generation activity. The Sewing Machine Operator course helps them to increase their income to support their families. This project was initiated in 2020, and so far has been trained and placed more than 450 beneficiaries from diverse geographic and underprivileged communities. Recently the batch no 6th have been graduated and placed in May 2022 in which a total of 26 beneficiaries were enrolled.

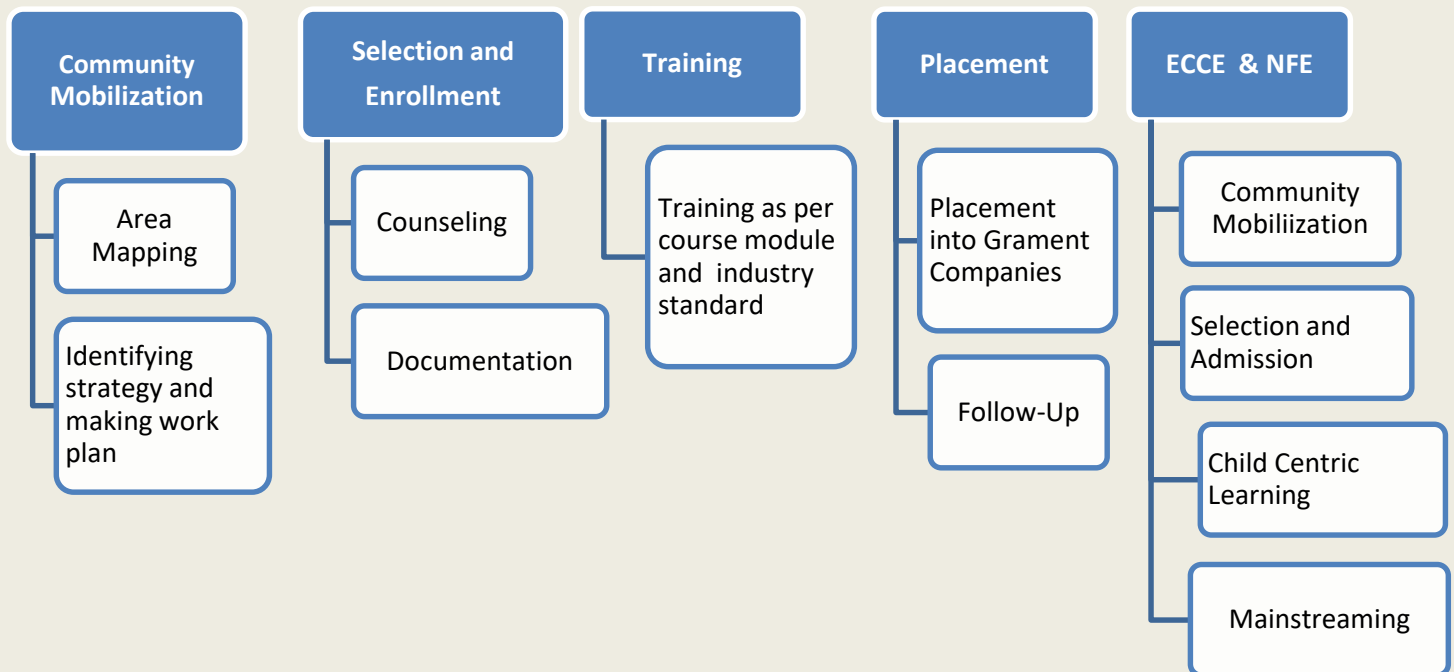
As per the information collected through baseline survey of the trainees, 42% beneficiaries



belong to Uttar Pradesh, 38% belong to Bihar, 12% are from Jharkhand and 4% each are from Gurgaon (Dundahera) and Rajasthan.

As per the collected information, the beneficiaries economic condition was very poor - 38% of Beneficiaries didn't have sustainable employment so they earn below 1 Lac annually and rest 38% Beneficiaries' family income is below 1,50,000. These people belong to migrated families mostly and due to weak financial conditions they wanted to learn stitching and wanted to get placed in garment sector to financially lift their families out of poverty.

The Methodology that Sakshi followed for this project was -



## COMMUNITY MOBILIZATION –

Community Mobilization starts with the mapping of different localities, post their identification our mobilization team visits and tries to identify the socioeconomic conditions of the community residing there defining the clusters accordingly.

After the defining of the areas different mobilization strategies are listed down apart from

the regular mobilization activities. Mobilization is done as per the defined plans. On the last working day of the month, overview of all mobilization activities is done to identify the flaws and improve the same in upcoming months.

## **SELECTION AND ENROLLMENT**

The interested candidates visit the Centre. The enrolment of the beneficiaries is based on the information gathered through one to one interaction done at the Centre. The counselling is done, to understand their employment need, financial conditions and willingness to take up a job. If they were found eligible as per the selection criteria, they were admitted to the course.

## **ORIENTATION OF THE STUDENTS**



After completion of the procedure of enrolment of participants, on the 1st of May, An orientation of the program was given to all participants comprising a brief description and objective of the course. After then, the Participants also introduced themselves as well as they told others their background history and purpose to get enrolled in the course.

Ms Krishna (trainer) made all participants aware of the importance of skill development of tailoring and how it's instrumental in improving employability and opening up income-earning opportunities as well as having a long term positive impacts such as reducing gender inequality and poverty as well as empowering women to take socially and financially independent.

## **TRAINING (Sewing Machine Operator)**

Sakshi, CAF India & Rio Tinto Livelihood Centre, Dundahera, Gurugram provides Sewing Machine Operator Course to participants who are in search of livelihood in Garment Industry. Through this course participants learn basics of sewing including types of needles, threads,



and stitches as well as they learn operations and adjustment of Lockstitch Sewing Machines. As we already know, in garment factories garments are made from the fabrics following a chain of process like all parts of stitching is done by combining the different garment components. So as a Seamster, It is essential to know and practise the various types of stitching parts that's why, participants are taught to make different part of stitching such as Sleeve Placket, Cuff Making, Collar, Pocket (V-shape, Round), Pintex, Cuff (Simple, Cut & Run) as well as Straight Stitching, Circle and Square stitching was also taught them as per the demand of garment industry.

On the first day of the stitching course, all participants are provided with an overview of the apparel industries and their production flows as well as they are given knowledge of sewing machines. On the second day, the participants get knowledge of sewing, including types of needles, threads, and stitches and they also start getting a hold on the sewing machine.

On the third day, participants are asked to practice on paper by using thread as well as they are told about the parts of the machine.

On the fourth and fifth days, participants practice straight stitching and topstitching.

On the last two days of the first week, participants learn about circle stitching as well as they practices on cuff and collar finishing.

In the 2nd week of the course, the participants were given knowledge of Lockstitch Sewing Machines, performing basic operations and basic adjustments.

Along with stitching course participants are given training of the basic workplace Etiquette such as correct sitting posture, how to introduce with other employees and the way of talking to supervisors and seniors.





## PLACEMENT

The Placements of the graduated students is an on-going activity. Job opportunities are provided to the recent pass-out students. Students are placed in garment companies. Below mentioned are the names of the companies in which the participants are successfully placed.

- Krishna Label
- Orient Fashion
- Richa Global
- Modelama
- Orchid
- Filament Fashion
- Pearl Global



The job role they have got is a sewing machine operator in which they are responsible for taking measurements, fixing accessories etc and the salary range for the majority of workers in Sewing machine operations is from Rs 8,000 to Rs 11,105 per month at the start of the job.

Most of the participants came from underprivileged communities surviving on a basic household income, and have faced a lot of adversaries and challenges throughout their lives. Their enrolment and completion of the course highlight their determination and dedication as well as helps them to succeed and financially lift their families out of poverty.



To Elicit the participation of the community in all the programs have been one of the most important strategies of Sakshi to aim towards sustainability, we ensure a proper system of support from experiential learning to job placements at Garment factories and have been able to successfully achieve 100% placement rate. These women now will enjoy their financial freedom as well they will be the support to their families which indirectly benefitting nearly 1000 people. These centers are sponsored by Rio Tinto.



## b) Mahila Panchayat

Sakshi in association with Delhi Commission for Women (DCW) offers crisis intervention and legal aid at community level and help to tackle local level legal disputes and assist in reduction and reconciliation of violence against women. Potential community leaders are

identified, trained and motivated to volunteer as Mahila Panchayat Members forming a 30 member team. They were trained on dispute addressing mechanisms, legal components relevant to crimes against women, given exposure about the existing legal position regarding property, maintenance, marriage, custody, etc. They are also given training in counseling, FIR writing and legal process while pursuing it further



with police stations and lawyers. The programme is undertaken in four areas of South Delhi and South East Delhi, covering two police station: FatehPur Beri and Kotla Mubarakpur. Training has proved to enable Mahila Panchayat to address cases of women's distress and creating awareness of their rights. This year Sakshi has covered 909 cases related to different crimes against women, like domestic violence, Dowry , Triple Talaq, Cases with Senior Citizens and more. Other than

addressing the registered cases, the team also performed door to door visits in the communities and reach to more than 10500 individuals to raise awareness on such issues. The Mahila Panchayat team also facilitated the community in registering and accessing different government entitlements and documents like – birth certificates, Aadhaar card, ration cards, Pan cards etc. As a part of their role they conducted Health camp, vaccination camp, yoga classes etc as well with the community people specially women and girls.



## b) Mobile Helpline (MHL) - 181

DCW in association with Sakshi works on running the 181- Women (Mahila) Helpline (MHL). The helpline is a 24X7 toll-free phone number which seeks to provide immediate assistance to women in distress. It is operated through a network of counselors, supervisors, consultants and experts.

Functioning of the helpline has supported women to report cases not just in Delhi but also in other states. The counsellors immediately begin assisting these women, and a team for assistance reaches, if required on the spot. The Helpline also disseminates' information about various support services and governmental schemes and programs which are available to women and the girls. The DCW has been able to substantially decreased rate of dropped calls and is trying to reduce further to zero. Sakshi MHL is working in Southeast and South Distt. of Delhi, covering the following Police Stations & had approached 3875 women in distressed and provided them all kind of support. The detail data is given below for references –



Defence Colony	Kotla Mubarakpur	South Campus	RK Puram
Lodhi Colony	Hazrat Nizamuddin	Vasant Vihar	Sunlight Colony
Safdarjung Enclave	Lajpat Nagar	Vasant Kunj North	Kotla Mubarakpur
Sarojini Nagar	Amar Colony	Vasant Kunj South	Greater Kailash
Jamia Nagar	Hazrat Nizamuddin	Kalkaji	

MONTH	TOTAL CASE MHL -1	Type of case	Number of DV Cases
Apr-21	161	Domestic Violence (DV)	95
May-21	132	Domestic Violence (DV)	66
Jun-21	267	Domestic Violence (DV)	154
Jul-21	302	Domestic Violence (DV)	154
Aug-21	253	Domestic Violence (DV)	119
Sep-21	232	Domestic Violence (DV)	89
Oct-21	208	Domestic Violence (DV)	71
Nov-21	215	Domestic Violence (DV)	85
Dec-21	284	Domestic Violence (DV)	102
Jan-22	218	Domestic Violence (DV)	88
Feb-22	267	Domestic Violence (DV)	95
Mar-22	269	Domestic Violence (DV)	110
<b>Total</b>		<b>2808</b>	

MONTH	TOTAL CASE – MHL 2	Type of Cases	Total Number of DV Cases
Dec-21	252	DV	103
Jan-22	274	DV	94
Feb-22	242	DV	112
Mar-22	299	DV	111
<b>Total</b>		<b>420</b>	



किरण नेगी  
सदस्य  
दिल्ली महिला आयोग  
**KIRAN NEGI**  
Member  
Delhi Commission for Women



सी-सीई, द्वितीय तल, विज्ञान भवन, इन्द्रप्रस्था एस्टेट, नई दिल्ली-02  
Ground Floor, Room No. 4, Indian Medical Association  
Indraprastha Estate, New Delhi-110002  
Tele. : 9355000658, 9355000657  
E-mail : kndow@delhi.gov.in

D.O. No. : .....

Dated : .....

### Letter of Appreciation

Sakshi NGO, a Delhi based grassroots organization has been working in coordination with the Delhi Commission for Women, for the betterment and support to women and girls in distress, since 2016 through Mobile Helpline Project (181). Sakshi is doing this work with their utmost professionalism and their work shows the commitment of the NGO and the team.

I take the opportunity to congratulate the organization and appreciate their all efforts towards the success of the project.

Date: 2<sup>nd</sup> September, 2022

  
(Kiran Negi)

# HEALTH AND WASH

The WASH Programs aim at improving the quality and people-centered healthcare services. Water, sanitation, hygiene (WASH) and basic health facilities are fundamentals that any individual requires to stay healthy.

All major initiatives to improve health scenario depends on sustainable provision of basic WASH services in healthcare facilities. The lack of access to water and sanitation and poor hygiene behavior has a major role to play in the deteriorating health scenario in India. The program also focuses on maintenance, monitoring and creating awareness on healthy habits.

Believing to overcome and reduce the negative impact on the health status of India -Sakshi has started to work towards the development of health and WASH facilities for the children, in the communities at large through renovating toilets, providing clean drinking water facilities, hand wash basins and dustbins in the schools of different project locations. Along with the hard component support Sakshi also focused on the soft components of the WASH initiatives through BCC with the children. All through the year Sakshi has conducted awareness camps, health check up camps (OPDs) etc and it has reached to more than 27500 people through health camps, awareness sessions, door to door visit etc.



11 Locations



4 Partners



75240 Beneficiaries

# Samajik Suvidha Kendra



SAKSHI believes, and has been working for an integrated community development, with special focus on the vulnerable section of the society. This 360 degree approach has been possible with the support of **GlaxoSmithKline Consumer Healthcare (GSKCH)**. The approach adopted is that of a well-knit cascade model:

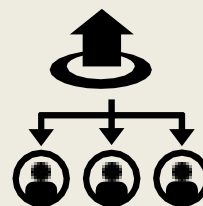
Teacher ----- Child ----- Parents ----- Community



3 communities



1 Partner



85000 Beneficiaries



Periodical WASH sessions have been organised in the communities at Gurgaon for awareness with proper hand washing and hygiene techniques. These have helped the 5181 community members to maintain hygiene during the spread of virus.

## Education

Under Education, Sakshi has been constantly providing support to children through Early Childhood Care Education, Non-formal Education and Remedial Classes. This has helped 960 children continue their education even during tough times.

## WASH



## Awareness

Sakshi organized regular OPD camps through Samajik Suvidha Kendra, for the community members, which were appreciated and it had helped 21653 community people, who couldn't reach out to doctors for various reasons, especially during pandemic, to address their health concerns.

## Health

Sakshi has been making constant efforts to provide 360 Degree support to the communities and thus, spreads awareness on government schemes, environmental issues etc. which can help them with their rightful benefits. Sakshi approached more than 6000 people through this.



## Mobile Medical Units

Under Sakshi's Health initiative, the newest addition is Mobile Medical Unit project called PRABHAT. Sakshi has started this unique health project this year from October -2021 and area of implementation is Chiplun, Maharashtra, with support from Hindusthan Uniliver.



The goal of this project was to -

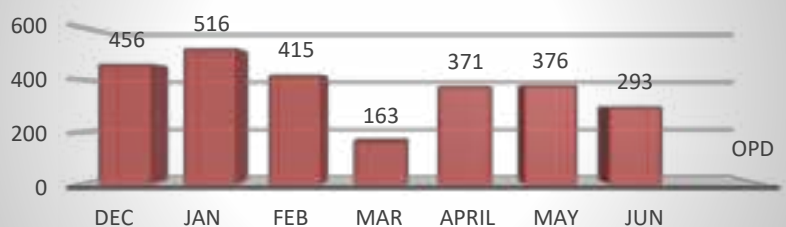


Improved community health and reduced disease occurrences through timely and better access of diagnostic healthcare facilities, and by achieving the goal of improving people's health confidence and well-being. This was the first year of this project initiation and to implement the project Sakshi had started this health service through a mobile van and this van went from village to village to provide basic health service to the villagers.

This project gained a great success and acceptances among the people of the project location. Some important achievement were mentioned here -

- Provided free treatment to 9079 patients through MMU, OPD and Health Camps from October 2021 to June 2022.
- Three thematic Mega health camps conducted for the underprivileged communities in which 1145 no of patients got benefitted.
- Easy access of free medical facilities across 19 Nos. of villages
- Mitigation of Skin, Eye, Respiratory and Anemia related diseases.
- Created a good relations with Sarpanch, ASHA worker and Anganwadi Sevika.
- Made community aware about Covid Precautions.
- Got Appreciation letter from Sarpanch and Health Department for serving community.

**A total of 2590 patients got benefitted from OPD from Dec 21 to June, 22**



## Support from Other Corporate Houses

### a. Logistic Support in Collaboration with Mitsui Chemicals:

Mitsui Chemicals has been a supportive partner to Sakshi for a long time. Like other years this year also the company supported Sakshi in implementing various development activities for better education

and health facilities. In collaboration with Mitsui Chemical India Pvt.Ltd, Sakshi has performed the following works this year –

CSR Activities for FY 2021-22 // Mitsui Chemicals India Pvt Ltd			
S. No.	Areas / Domains	Activity	Status Dated as on. 30-06-2022
1	HealthCare & Family Welfare	Donation of COVID19 Safety items to Police/Sanitation Personals	176 automatic soap dispenser (KENT) to Joint commissioner of police
		Donation of Computers & Printers in Govt Hospital	20 computers and 20 Printers at LNJP Hospita
2	Education	Annual Sponsorship (Blind Children)	Scholarship Blind School RK Puram
		Safety of primary level school students (MC)	Insatllled CCTV system in SDMC Primary School Ambedkar Nagar Sec.6 No.3 New Delhi, to cover the entire school campus.
3	Environmental Sustainability	Installation of Solar Items in Sari/Lab Area, Gujarat	30 solar lights Sari Village-Gujra
4	Water Supply (Drinking Water)	Installation of Water Filters cum Coolers in Schools	1. SDMC Primary School Maidan Garhi New Delhi. 2. SDMC Primary School Shivaji Enclave New Delhi. 3. SDMC Primary School AD- Block Tagore Gardan New Delhi. 4. SDMC Primary School A-1 Janak-Puri New Delhi.
5	Sports & Culture	Donation of Sports Items in schools / sports institutes	1. SDMC Primary School Pushp Vihar Sec-1 No.1 2. SDMC Primary School RK Puram Sec-5 3. SDMC Primary School Kailash Colony 4. SDMC Primary School Pushp Vihar Sec-3 Boys 5. SDMC Primary School Bhati Mines 6. SDMC Primary School Saket 7. Sakshi School Jasola 8. SDMC Primary School Andrews Ganj 9. North MCD Primary School Karala Delhi

Sakshi Team and Mitsui Chemicals Team Members along with **Dr. Ajit Kr. Singla, Joint Commissioner, P & L, Delhi Police**



#### **b. Support from PNB Bank :**

PNB Bank extended their donation support of Rs. 1 lakh to Sakshi as well this year for our commendable work with the slum people and children at the grassroots level.



## CRECHE & DAY CARE CENTER



Sakshi ensures childcare – health, nutrition, early learning and care – for birth-12 year old children living at the construction sites of Delhi and Gurgaon (NCR). The goal is to persuade construction companies to institutionalize 'creches at all sites' as policy, capacitate other organizations to run childcare facilities at a workplace or in a neighborhood, and strengthen the state system. Sakshi takes full responsibility to set up and manage the 9-5, 6 days/week crèche programme, with trained staff and team members.



A crèche, daycare or nursery is a childcare Centre where babies, toddlers, and young children are cared for in a safe and stimulating surrounding. Crèches mostly cater to the children of parents with full-time or part-time jobs. With the increase in the number of nuclear families and working parents, crèches and daycare centers is being used by many parents. This is the 3rd year of the programme managed and supervised by Sakshi and the project has been

operational in two construction sites of Gurgaon. The program is supported and guided by Mobile Crèches.



Sakshi has been managing and supervising mobile day care centre & Creche at constructional sites at Gurgaon for 3 consecutive years. Most of the construction workers are contractual laborers from nearby states or cities and are here on a temporary basis. In the plight for survival, focus towards child development and education is negligible and safety is often ignored. The young children living at construction sites often suffer from malnutrition, under-nourishment, accidents, and innumerable health problems. Elder children of construction workers often have to take care of their younger siblings while their parents are at work and this result in them being out of school.



Sakshi centres provides holistic day-care focusing on the cognitive and behavioral development of the children, nutrition, health and hygiene. Children are enrolled in three groups as per their age. The ones aged between 0 to 3 years are taken in Sakshi's crèche, 3 - 6 year old children are enrolled at Sakshi's Balwari centre and the children from 6-14 years of age are enrolled in Non-Formal Education group operating from the same unit.

SAKSHI reached 240 children through these center and in the process of this indirectly benefitting 1200 family members of these children, who can go to their daily construction labor work as they know their children are safe in the centers.

# COVID Pandemic- Support



Distribution of PPE Kits



Raw material & Cooked food Distribution



Sanitisation Kit Distribution



Travel support to Migrants



Plasma Donation Camps

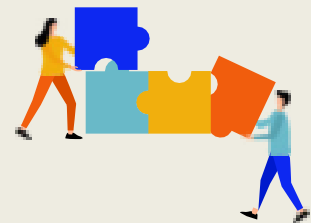
Sakshi Stood by its values of : Agility, Respect and Collaboration, in the most difficult times for humanity. During the outbreak of Pandemic - COVID-19, Sakshi spread its hands to help and support people through food, sanitisation kits and all the emergency support we could. Our staff literally moved on wheels 24\*7 in order to help people. Our Approach was to focus on awareness and knowledge dissemination, as we were helping the families to sustain and thrive through the difficult times.



21 Communities



215000 Beneficiaries



10 Partners



## Become a Sponsor

We would be highly delighted to have you in our family of sponsors. Your one good step will bring these marginalized children closer to a better life that they dream of.

**A special lunch/dinner for up to  
125 children -INR 10,000**

**Breakfast or evening snacks for  
up to 125 children  
-INR 5,000**

**Donation in cash or kind for specific purpose like  
blankets, warm clothes, bed cushions, bedsheets,  
pillows, play materials, clothes, shoes, socks, locks and  
keys, etc**

**An outing for 40 children of your  
choice for a day/ Arrange  
transportation  
-INR 20,000**

**Sponsor a child for one year (including  
food, shelter, clothing, health, education,  
games, outings, etc.)  
-INR 72000/-**







**D - 332 DEFENCE COLONY NEW DELHI**

**INCOME & EXPENDITURE ACCOUNT AS ON 31ST MARCH, 2022**

EXPENDITURE	AMOUNT (RS.)	I N C O M E	AMOUNT (RS.)
To Project Expenses (As per details)	6,26,44,628.72	By Projects Receipts (As per details)	6,26,44,628.72
To Other overheads	24,77,060.82	By General Donation	21,89,684.47
To Depreciation	25,272.00	By Bank Interest	13,03,544.73
To Excess of income over Expenditure	12,19,727.38	By Other Income	2,29,031.00
<b>Total</b>	<b>6,63,66,688.92</b>	<b>Total</b>	<b>6,63,66,688.92</b>

**AUDITORS REPORT**

As per our report in 108 of even date

  
 ( Mridula Tandon )  
 President


  
 ( Zuber Ahmed )  
 Project Director



For SAMPRK & Associates  
 Chartered Accountants  
 FRN 013022N  
  
 ( Kishay Kumar )  
 Partner  
 RR No 088271  
 UDIN:22088271AUKRXA6963

Place : New Delhi  
 Date : 22/09/2022



A group of children in school uniforms are gathered around a tablet computer. One child is pointing at the screen, which displays a colorful illustration of a lighthouse on a hill. The background is a green wall.

**TO DONATE:**  
**MR. ZUBER KHAN, DIRECTOR**  
**PH: 9811233595/011-24621743**  
**EMAIL: sakshi.cec@gmail.com**  
**Website: [www.sakshingo.org](http://www.sakshingo.org)**

**Visit us**

**Head Office:**  
**D-332, Defence Colony, New Delhi - 110024**  
**Website: [www.sakshingo.org](http://www.sakshingo.org)**

## Our Partners



Deborah Rose Foundation - USA



## Government Partnerships



## **A Special Note of Thanks to All Our Contributors and Supporters**

We are deeply thankful to thousands of individuals, corporates, institutions and agencies who have come along on this journey with us.

Please know that each and every contribution is important to us. In times, when every humanity suffers, when children struggle to access basic Education, when communities suffer basic facilities of food and shelter and now that disasters are happening more frequently and in places which have never seen a day before, all of us continuously working together is especially valuable.

